

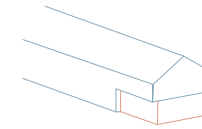
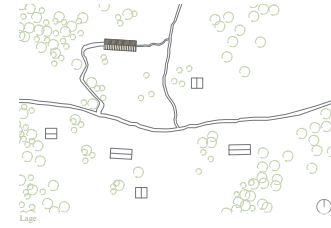
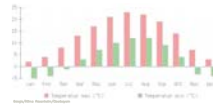
Analyse des Urtyps



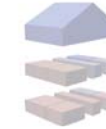
Ort Oberbayern, Rosenheim
 Klima Kontinentalklima
 Temperatur Warme Sommer, kalte Winter, geringe Tag-Nacht Unterschiede
 Luftfeuchte hoch
 Niederschlag hoch



Klima / Jahresdurchschnitt
 Sonnenstunden / Tag 4,8
 Regentage / Monat 14 Tage
 Jahrestemperatur 8,3

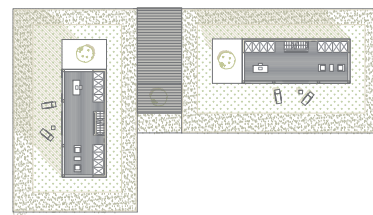
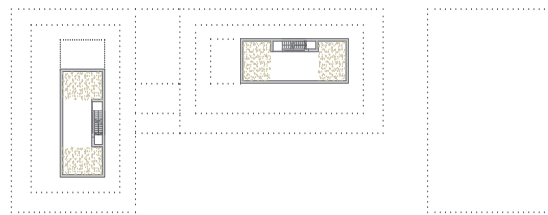
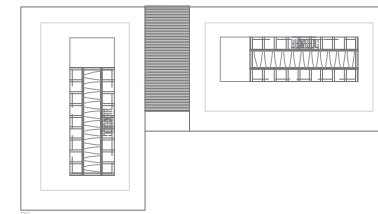
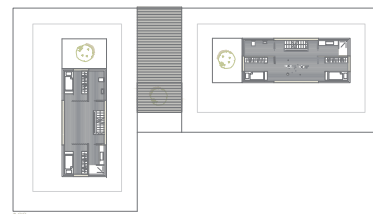


Raumnummerung

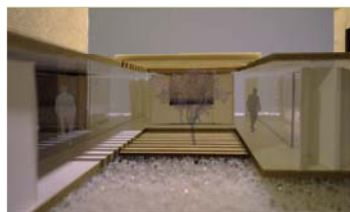


Material
 Blockbau aus Holz fuer das Obergeschoss (leicht)
 Bruchsteine fuer das Erdgeschoss (massiv)

Entwurf



Konzept

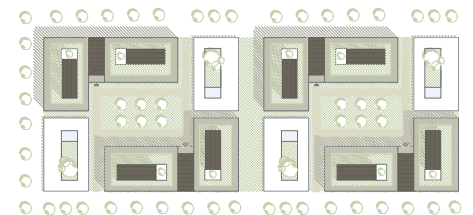


Gemeinschaftszone zwischen 2 Hausseinheiten



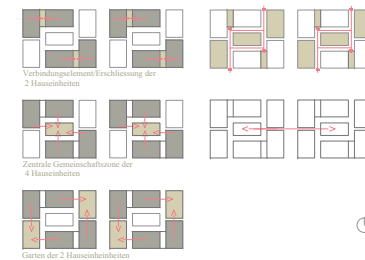
Ansicht bei Nacht

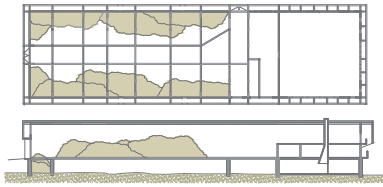
Lage



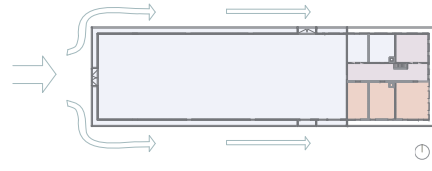
Gemeinschaftliche Zonen

Erreichung / Zuwegung

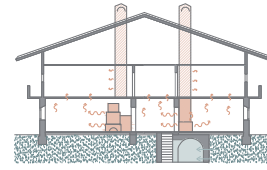




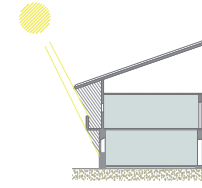
Pufferzone



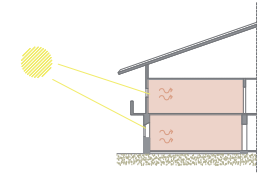
Raumzonierung



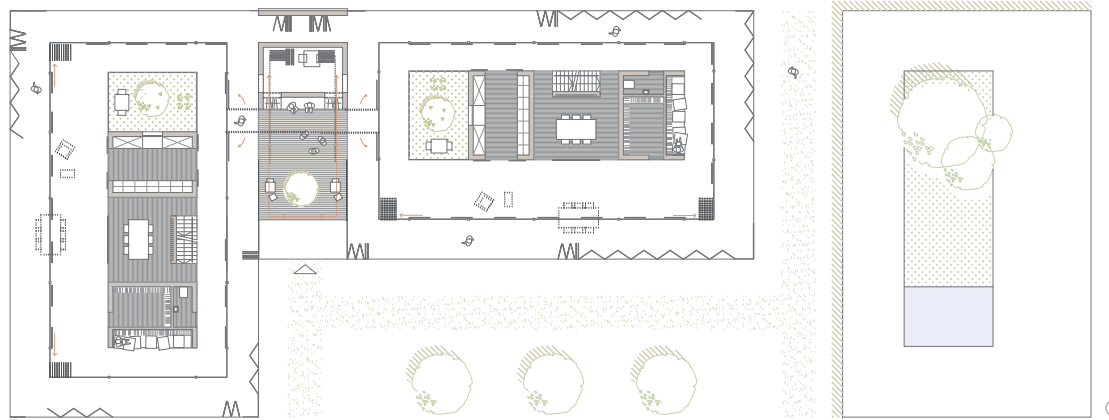
Punktwaermequelle / Erdkuehle



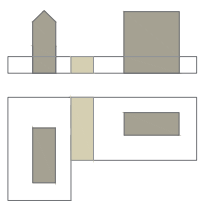
Waermeschutz im Sommer



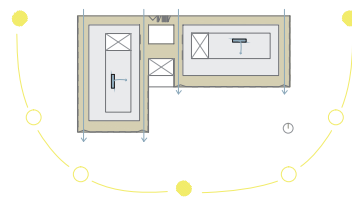
Waermegewin im Winter



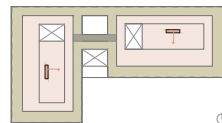
Formfindung



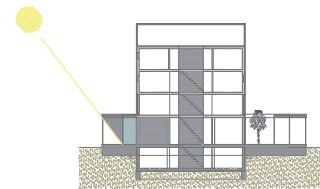
Raumzonierung/Pufferzone Sommer



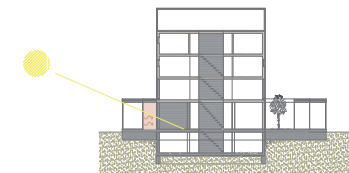
Raumzonierung/Pufferzone Winter

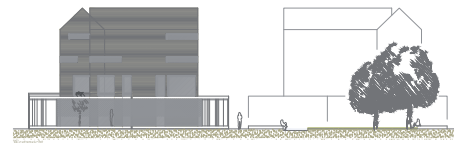
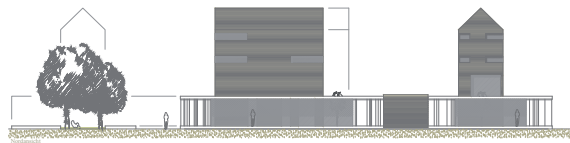
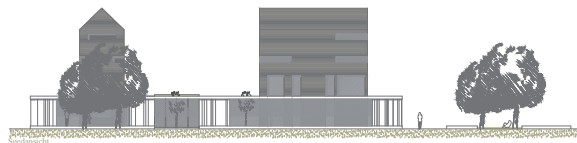


Waermeschutz im Sommer



Waermegewin im Winter

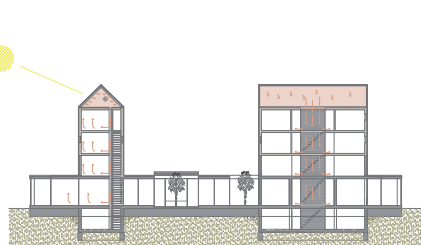




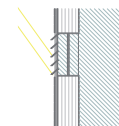
Kühlungsprinzip im Sommer



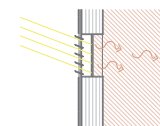
Wärmeprinzip im Winter



Verschattung im Sommer



Wärmegewinn im Winter



Belüftung

